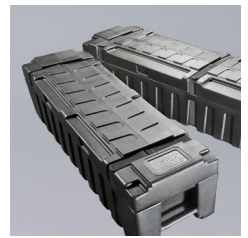


ULTIMATE FOLDING SCREEN

PORTABLE FOLDING PROJECTION SCREEN



■ The ULTIMATE FOLDING SCREEN (UFS) is the first screen manufactured with 100% CNC (Computer Numerical Controlled) components and assembled with CNC technology. The lock and load latch is designed for ease of operation and maximum life and makes the frame extremely rigid. This screen is user friendly and incredibly durable. Built for repeated setup and tear down to handle the rigors of shipping and rental applications.

FEATURES

- **ALL SURFACES:** Surfaces, front and rear, have square corners.
- **BORDERS:** Electronically welded using a PVC material that provides straighter, cleaner edges.
- **STANDARD LEGS:** Can adjust in 6" (15.2 cm) increments up to 48" (123 cm) from the floor.
- **CASE:** Comes packed in Draper's heavy duty, molded polyethylene, wheeled carrying case.
- **WARRANTY:** One year against defects in materials and workmanship.
- **US PATENTS:**
<http://www.draperinc.com/legal/patents/>

OPTIONS

- **VIEWING SURFACE:** Available with [viewing surfaces](#) from the OptiFlex (tensioned) and CineFlex (rear projection) families.
- **ACCESSORIES:** Available with [Dress Kit](#), [Pipe and Draper Runoffs](#) and many other [accessories](#).

SUPPORTING DOCUMENTS

All instructions, technical drawings and other supporting documents are located at:
www.draperinc.com/Documents.aspx

SIZES

- **16:10 FORMAT:** from 95" (241 cm) to 201" (511 cm) dia.
- **16:9 HDTV FORMAT:** from 106" (269 cm) to 220" (559 cm) dia.
- **4:3 NTSC/PAL FORMAT:** 90" (229 cm) to 20' (610 cm) dia.
- **AV FORMAT:** from 72" x 72" (183 cm x 183 cm) to 12' x 12' (366 cm x 366 cm)
- **CUSTOM SIZES AVAILABLE**

For more information on this product visit:
www.draperinc.com/go/UFS.htm