



# User Manual

## celexon Manual Economy



Thank you for purchasing this product.

For optimum performance and safety, please read these instructions carefully before connecting or operating this product. Please retain these instructions for future reference.

## WARNINGS

The purpose of these operating instructions is to familiarise you with the operation of this this product. Therefore, keep these instructions in a safe place so that you can refer to it at any time.

- Before installation, please refer to the enclosed data sheet for further safety and use instructions.
- Do not begin installation until you have fully read and understood the complete operating instructions.
- This product should only be installed by qualified personnel with mechanical and electrical knowledge.
- Carry out the installation with another person to ensure safe installation.
- Remove the product from its packaging and remove all packaging materials.
- Make sure that no packaging material is on or in the product. If you notice any damage to the packaging, also check for damage to the product.
- If you notice any external damage to the appliance or any unexpected or unusual functioning, do not use the product further. Immediately contact the dealer from whom youyou purchased the product or celexon directly (Web: [www.celexon.co.uk](http://www.celexon.co.uk), Mail: [info@celexon.co.uk](mailto:info@celexon.co.uk)) for further information. To ensure trouble-free operation, the product may only be used indoors. It is NOT suitable for outdoor use.
- The use of the appliance and accessories is forbidden to children under 16 years of age.
- Ensure that no children play with the appliance or are in the vicinity without supervision.
- Modifying or altering the product may compromise product safety.
- Caution: Risk of injury! Never open the product yourself unauthorised. Never carry out repairs yourself!
- This product can only be used under the standard technical parameters.
- Do not use the product near corrosive gas, water or in a dusty environment.
- Handle the product with care. It can be damaged by knocks, blows or drops from even a small height.
- Keep the product away from moisture and heat. Never immerse the product in water or other liquids.
- Use the product only in the manner for which it is intended. Use for any

other purpose may result in damage to the product or its surroundings.

- Carry out the installation with another person to ensure safe installation  
Technische Änderungen und Irrtümer vorbehalten.
- Tighten the screws, but do not overtighten them. Overtightening (e.g. tightening using a cordless screwdriver) can cause damage and impair the secure hold of the screen.
- Suspended loads must be checked at least twice a year for strength and load-bearing capacity at least twice a year.
- Children should not use the screen or play under it unsupervised.
- Failure to follow the above instructions may result in personal injury and damage to the product or equipment. Incorrect installation or use may also invalidate the warranty
- If you are unsure about the use of the product, please contact your
- specialist personnel, your dealer or celexon directly  
(Web: [www.celexon.co.uk](http://www.celexon.co.uk), Mail: [info@celexon.co.uk](mailto:info@celexon.co.uk))
- Technical changes and errors expected.

The manufacturer accepts no responsibility for damage to property or personal injury if the screen is used outside the recommended specifications or for improper installation. Do not use this screen near heaters or air conditioners. Also do not mount product in direct sunlight or in front of a window. Due to the temperature-sensitive PVC surface, the projection screen may be permanently damaged.

We recommend that you wait approx. 2 hours after delivery before installing the projection screen. This allows the projection screen to acclimatise, especially if the screen is moved from a cold to a warm environment.

Please avoid any stains on the surface of the fabric. These may not be able to be removed.

## **DISCLAIMER**

The information in this document is subject to change without notice by the manufacturer. Changes will be added to subsequent versions of this manual. The manufacturer does not guarantee or warrant for the correctness of the information in this document.

## **CARE INSTRUCTIONS**

NEVER clean the screen with alcohol or other cleaning agents that contain solvents. Use only a soft and clean cloth. A mild soap solution (max 5%) may be used to remove dirt from the surface. Avoid contact with sharp or pointed objects as these could permanently damage the projection screen fabric. Further instructions can be found in the enclosed projection screen instructions.

## IN THE BOX



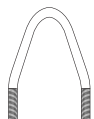
1x Screen



4x Plastic dowel



4 x Screws



4 x Ceiling loops



4x washers



4x Nuts

## INSTALLATION NOTES

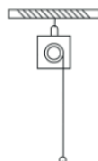
Install the screen in a position that is fully visible to all viewers! The optimum installation height corresponds to the position of the viewers in the centre of the screen with the screen fabric extended: eye level = lower third of the screen surface.

The screen can be installed on the wall/ceiling or hung from the ceiling on hooks (the eyelets are already on the side cap). For wall or ceiling installation only, the eyelets should be removed in advance). Please make sure that the metal shims are also used for wall and ceiling mounting, otherwise safe installation cannot be guaranteed).

The enclosed installation material is intended for a solid stone wall. If necessary, obtain suitable mounting material for your installation surface.

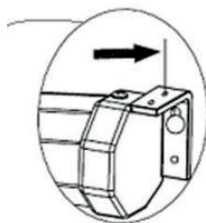
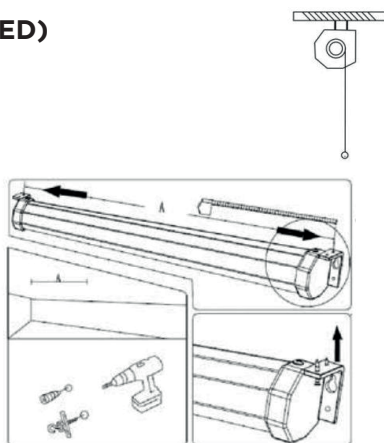
## CEILING MOUNTING (VIA EYELETS)

Attach the eyelets to the two side caps and measure the distance between them. Mark the points on the ceiling and make sure that the eyelets are aligned with each other and parallel to the wall. Pre-drill the holes at the markings with the right diameter drill bit for the hooks and mounting material, fix them to the ceiling and hang the screen.

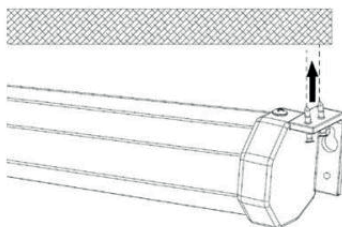


## MOUNTING ON THE CEILING (SCREWED)

Measure the distance between the holes in the side caps (two per cap) and transfer them to the ceiling. Drill the holes at the markings with the right diameter drillbit for the diameter of the mounting material, insert and screw the screen in place tightly. Make sure that the holes are parallel to the wall! Use dowels and screws suitable for your mounting surface.



**Caution:** Do not overtighten the screws! If you notice cracks in the caps they must be replaced! The screen must not be used with cracked caps. Please ensure that the metal plates are also used for wall and ceiling mounting, otherwise a safe installation cannot be guaranteed).



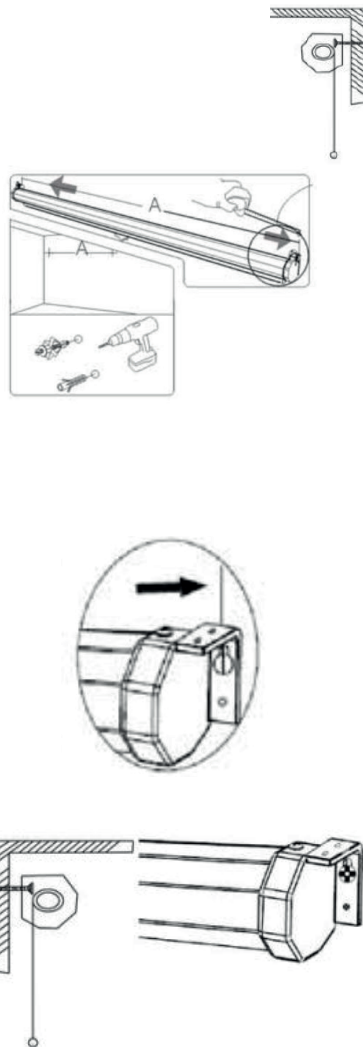
## MOUNTING ON THE WALL

Measure the distance between the holes in the side caps (two per cap) and transfer them to the wall.

Drill the holes at the markings with the holes with the right diameter for the mounting material and make sure that the drill holes are absolutely level (Use a spirit level!).

Use dowels and screws that are suitable for your mounting surface. Screw the two upper screws into the wall most of the way and hang the screen from both sides into the upper hole. Make sure that the screen is installed straight and level. Tighten the screws and then tighten the lower screws on both sides of the screen.

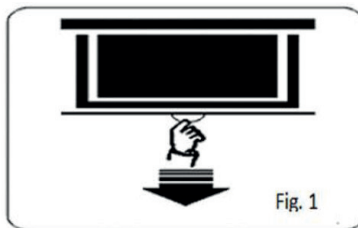
**Caution:** Do not overtighten the screws! If you notice cracks in the caps they must be replaced! The screen must not be used with cracked caps. Please ensure that the metal shims are also used for wall and ceiling mounting, otherwise a safe installation cannot be guaranteed).



## OPERATION

### STEP 1: PULL DOWN THE SCREEN

Pull the fabric by the handle of the weighted bar to the desired position (Fig. 1). Wait 1-2 seconds and slowly release the handle until the screen locks. The screen can be locked at multiple lengths.



### STEP 2: RETRACT THE SCREEN

Pull the fabric down a few centimetres quickly so that the mechanism is unlocked (Fig. 2).

When the lock is released, you will feel a slight retraction. Move the screen vertically upwards at an even speed. Do not allow the screen to retract upwards without being guided, otherwise the bar will enter the housing at great speed and the abrupt force can damage the screen and side caps. The screen could fall down and injure people! Please note: Never pull the screen all the way to the end, as it can then no longer be retracted.

Look out for the stop sticker at the top of the screen fabric and do not go beyond it.

